

HOW TO MAKE CHEW CARDS

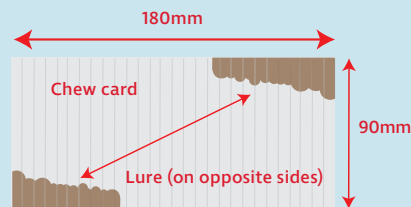
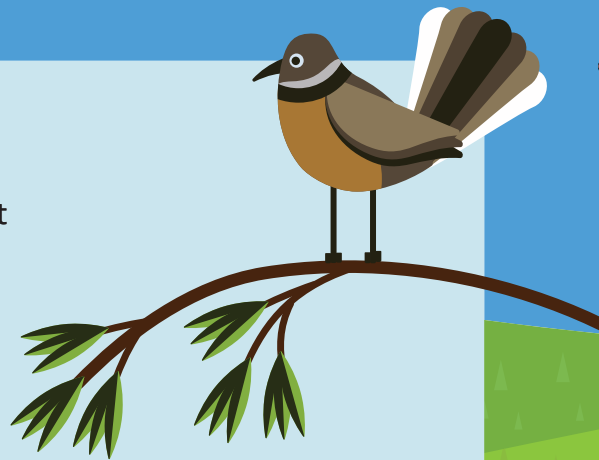
Chew cards are a simple tool to help identify the presence of rats, mice, stoats, possums and hedgehogs.

Equipment

- 3mm thick corflute - old real estate signs are perfect
- A sharp craft knife
- A flat knife or paint scraper
- Smooth peanut butter (this is your lure)

Cut the cards

- Cut the corflute into rectangles (approximately 90mm by 180mm)
- Ensure the internal channels (flutes) run across the width of the card
- Cut the corflute accurately so the amount of lure in each card is the same



Apply lure

- Make a pile of approximately ten chew cards
- Get a full knife of peanut butter
- Hold the cards together and spread lure along **half** of each side (at opposite ends)
- Hold up the cards to check the lure is 12–20mm into the flutes

© Wild Things Issue 148, August 2020. Produced by Forest & Bird

How to use chew cards

USE YOUR eyes



USE YOUR hands



A chew card mounted on a tree. Photo: DOC

© Wild Things Issue 148, August 2020. Produced by Forest & Bird

- 1** Name or number each card so you can tell the cards apart and record the results accurately.
- 2** Choose places to put them where you have seen evidence (signs) of introduced predators if you can. Otherwise, try putting them along fence lines, at the base of trees, or near rubbish and compost bins.
- 3** Fold your chew card in half (like in the picture) and leave the top flap open. Nail it in 30cm above ground level.
- 4** Leave the chew card out for seven days before "reading" the marks.

