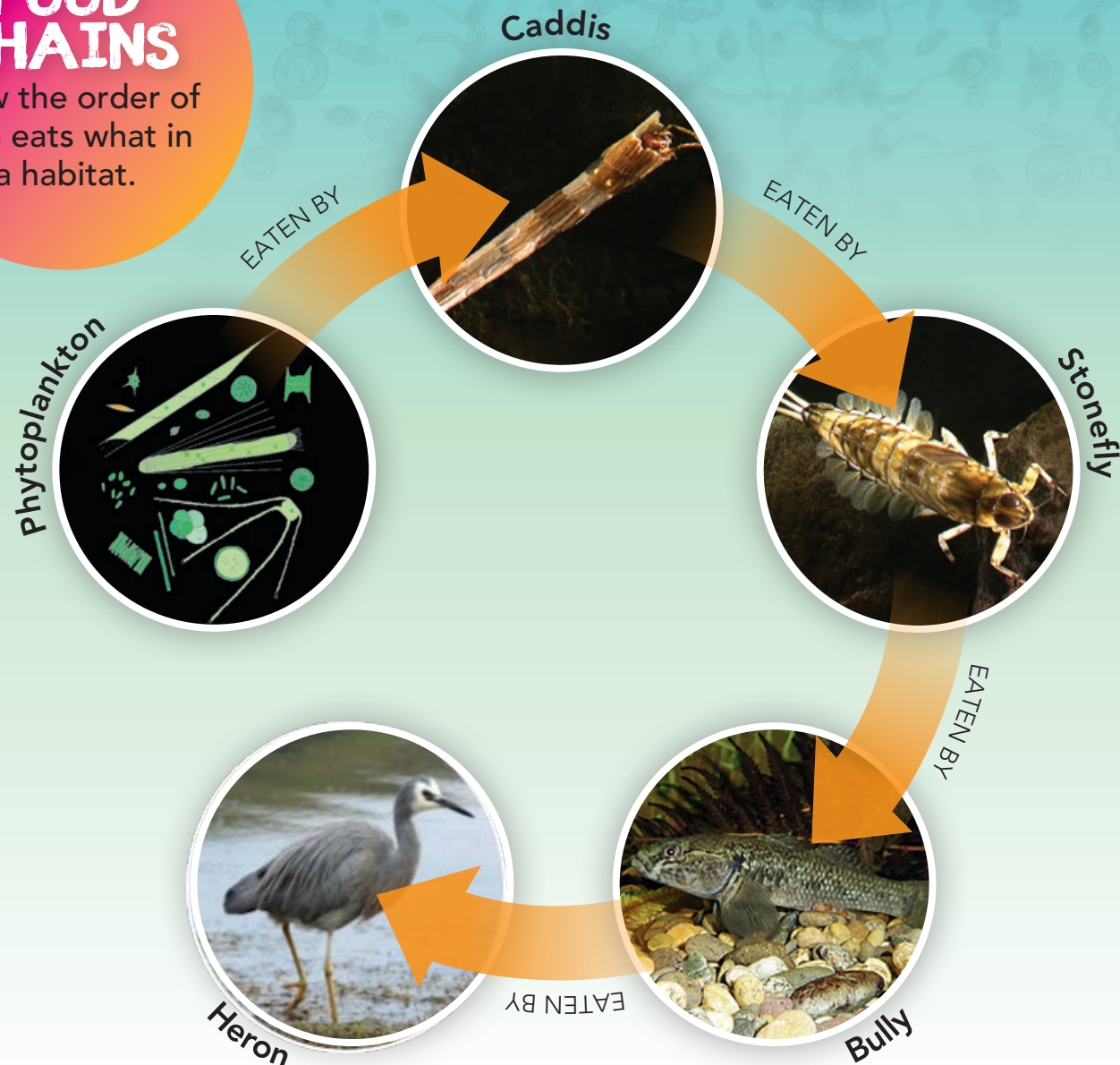


FOOD CHAIN VS FOOD WEB

Food chains and food webs are both types of diagrams used by scientists. They show how living things depend on each other for food and how they are connected in many ways to help them all survive. Here are some examples based on a wai māori | freshwater habitat:

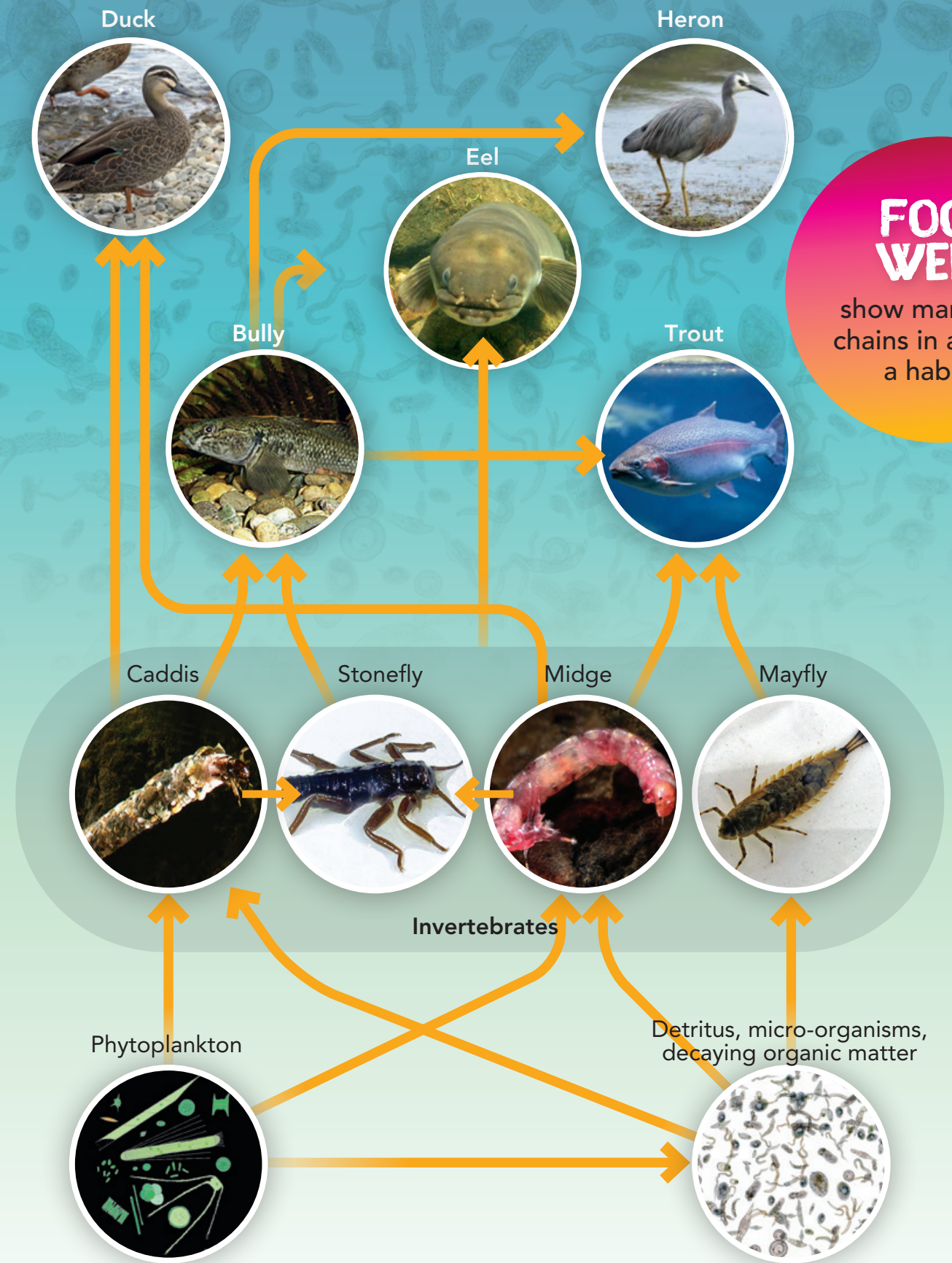
FOOD CHAINS

show the order of who eats what in a habitat.



FOOD WEBS

show many food chains in action in a habitat.



What would happen if a species was lost?
What if new plants or animals were introduced?