

# IS IT A HEALTHY HABITAT?

Using macroinvertebrates to measure water quality

If the water is healthy, you'll find more of these living in it...



Mayflies

Large stoneflies

Uncased Caddisflies

Dobsonflies

Cased Caddisflies

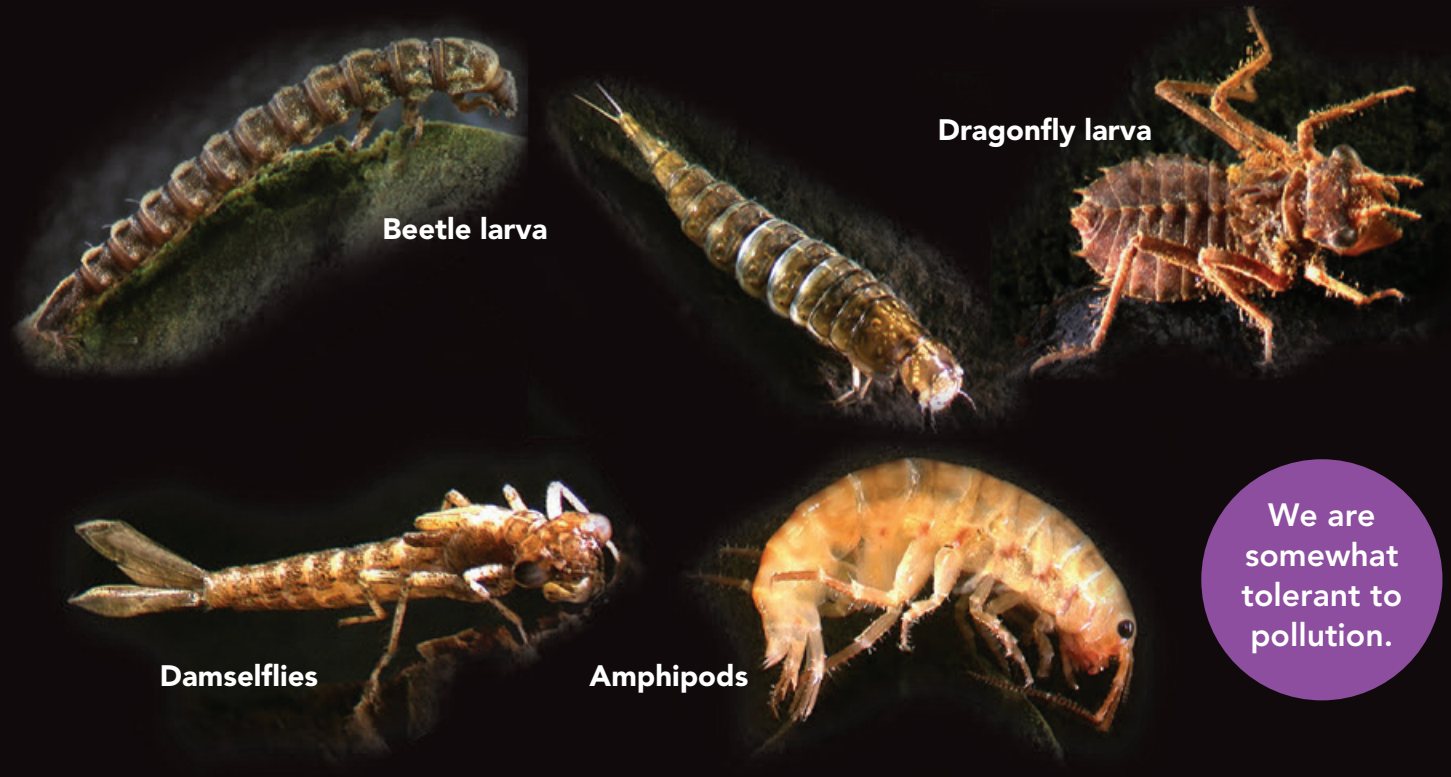
Beetle larva

This information is best used when exploring hard-bottomed (stony or gravelly) streambeds.

We are least tolerant to pollution.



If the water is ok, you will find more of these living in it...



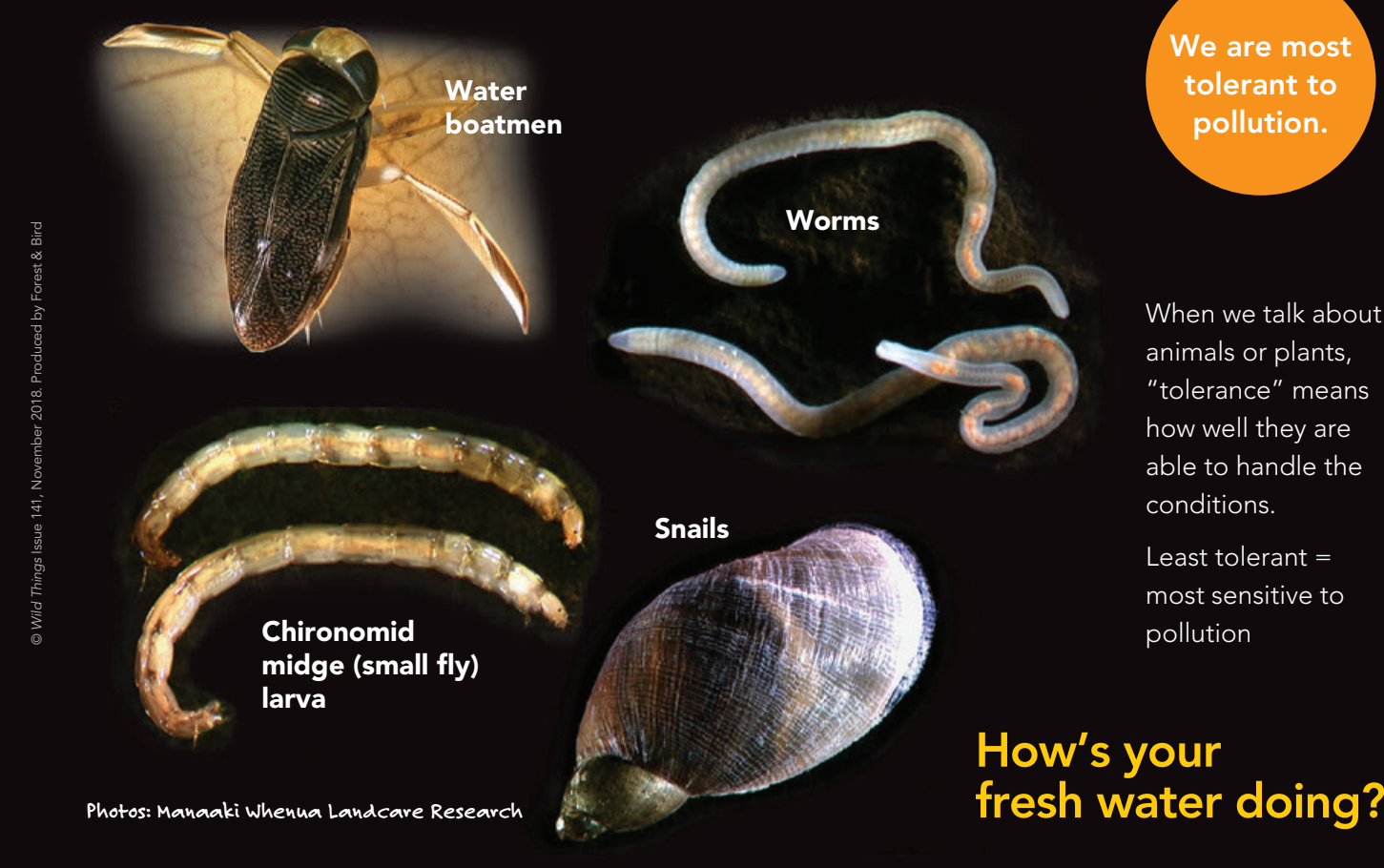
Dragonfly larva

Damselflies

Amphipods

We are somewhat tolerant to pollution.

If the water is unhealthy, you will find mostly these living in it...



Water boatmen

Worms

Chironomid midge (small fly) larva

Snails

We are most tolerant to pollution.

When we talk about animals or plants, "tolerance" means how well they are able to handle the conditions.

Least tolerant = most sensitive to pollution

How's your fresh water doing?

Photos: Manaaki Whenua Landcare Research

© Wild Things Issue 141, November 2018. Produced by Forest & Bird