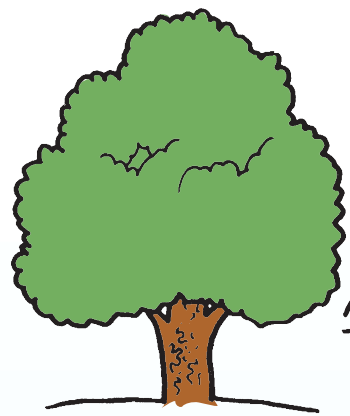


The rimu tree.

Draw its shape



The plane tree.

WOW! These trees are huge!



Tiny, spikey leaves.

Describe and draw its leaf.



Big flat leaf the size of my hand.

They are SPIKEY all right!



Do the leaves fall off in autumn (deciduous) or do they stay on all year (evergreen)?

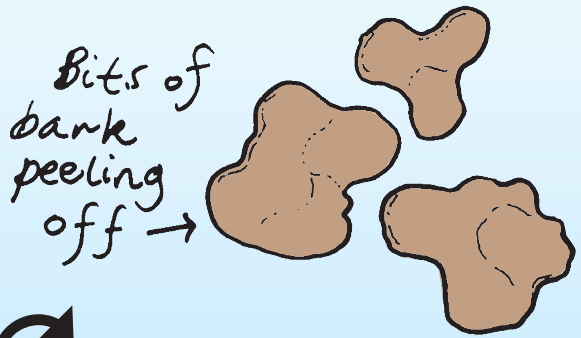
The leaves stay on all year. It is evergreen.

The leaves fall off in winter. It is deciduous.



Rough, dark coloured bark.

Describe and draw its bark.



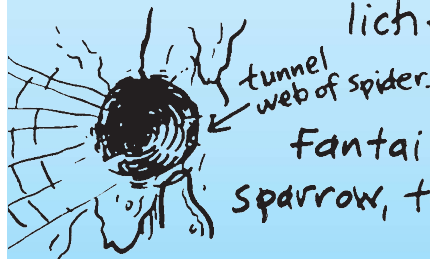
Bits of bark peeling off

Home sweet home...

What's living on the bark? Lichen? Spiders? Insects? Are there holes where insects might be living?

Heaps of spiders and spiderwebs. No lichen.

Caterpillars, some ants, lichen growing on the peeling-off bark on the south side.



Fantail, sparrow, tui.

Sit and watch. What birds are going to your tree?

Black birds, starlings, sparrows.

It's BIG! It usually grows in the bush. My tree is a cool tree!

What else did you find out about the tree?

Caterpillars eat holes in the leaves. Flocks of starlings rest on the branches. It's an awesome tree!