

# Pātai Challenge



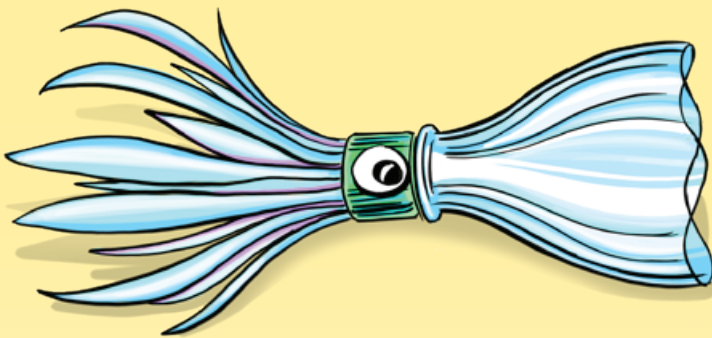
Send in a photo or video of your mahi to [kcc@forestandbird.org.nz](mailto:kcc@forestandbird.org.nz) and be in to win 10 mystery prizes!  
Closes 30 October 2024

## Undiscovered creature of the deep!

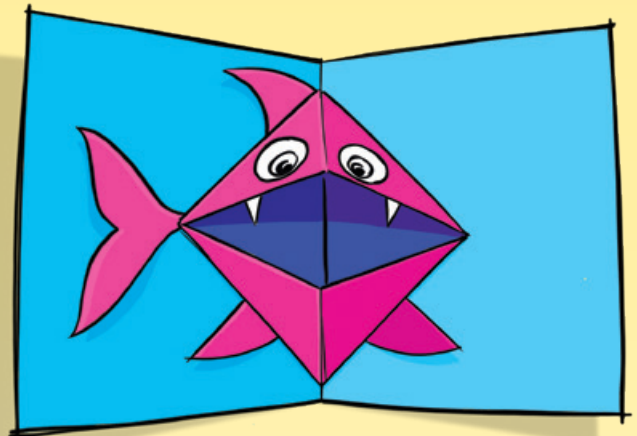


There are so many species yet to be discovered in te moana uriuri | the deep sea. **What do you imagine could be living there?**

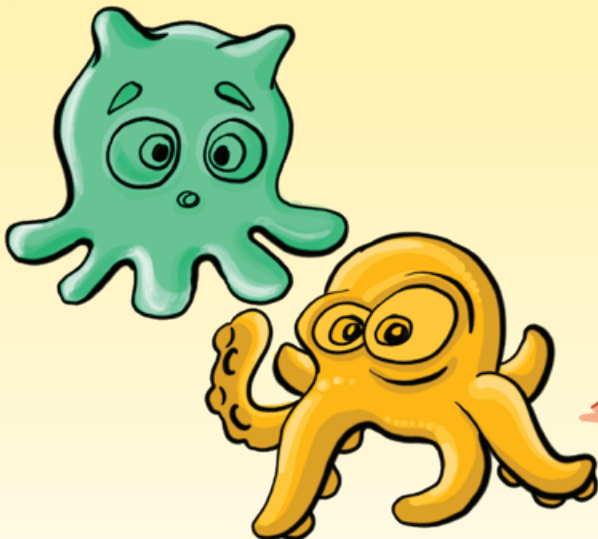
Get ideas from the information shared in this issue of *Wild Things* and do your own research too. Any building technique will do, but to give you some ideas...



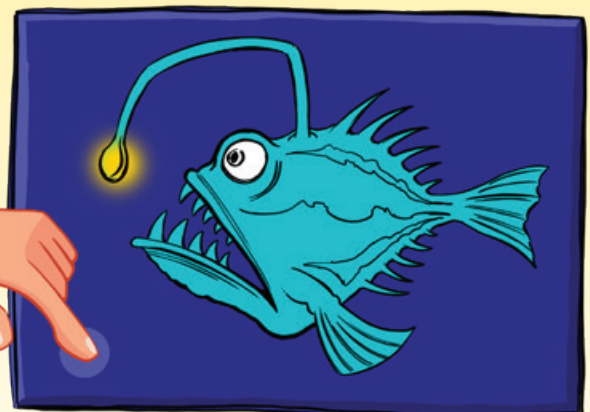
Reuse plastic bottles to give transparency to your construction.



Use paper folding or pop-up techniques to appear unexpectedly!



Use playdough to make a squishy body.



Make a paper circuit or sew circuits to create a light display.